



# DATA-CONTROL PC

FROM CONCEPT TO MASS PRODUCTION



**CONSULTING**

010101  
110101  
101011

**FIRMWARE**



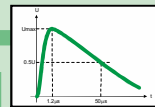
**DESIGN**



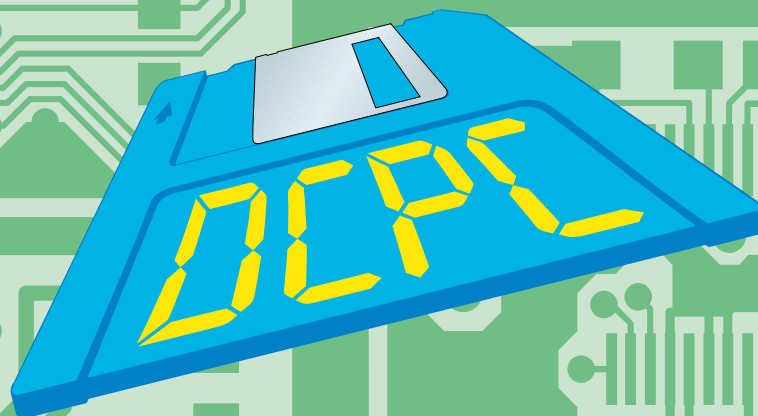
**SOFTWARE**



**PRODUCTION**



**EMC LAB**



[www.dcpc.me](http://www.dcpc.me)  
[info@dcpc.me](mailto:info@dcpc.me)

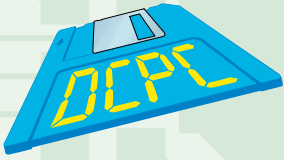


**INDUSTRY  
4.0**



Sistema de  
Gestión  
ISO 9001:2015  
[www.tuv.com](http://www.tuv.com)  
ID 9105041848





**DATA-CONTROL PC** is a leading company, with more than 25 years of experience in design and manufacturing electronic equipment, as well as WINDOWS and ANDRIOD software.



## Consulting

- Support and Help for Innovation, Design Thinking techniques
- Support in the definition of the product
- Advice for CE marking and other regulations



## Products Design

- R & D project management
- Mechanical and industrial design in 3D; enclosures, moulds and matrices
- Electronic design and ICT
  - Architecture Hardware, Firmware and Software
  - IoT Technologies, Industry 4.0 (Low Power Designs, Security, Energy Harvesting)
  - Analog design (Sensors, conditioning and acquisition)
  - User interface (Displays, keyboards, touch screen, etc.)
  - Embedded Controls (RTOS, micro-controllers and / or DSPs)
  - Communications by cable (RS232 / RS422 / RS485, Profibus, Profinet, CAN, Devinet, Ethernet, etc)
  - Wireless communications (BTLE, LoRA, Sigfox, Weightless, ZigBee, WiFi, 2G / 3G / 4G, NB-IoT)
  - Power supplies
- Design of printed circuits (PCB)
- Tooling design for verification and start-up
- Generation of all documentation for production, verification and use



## Production

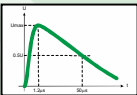
- Management of industrialization projects
- Quality assurance
- Management of the entire value chain (Planning, supply, subcontracting, logistics)
- Manufacturing of:
  - Printed circuits (PCB)
  - Keyboards and overlays
  - Enclosures (FE, Inox, AL, Plastics) and 3D Rapid Prototypes
  - Customized cables
  - Tooling for verification and start-up
- Assembly and verification of printed circuits (PCBA)
- Assembly and verification of electronic equipment (Manufacture of prototypes and series)
- Assembly of electrical control cabinets
- Assembly of mechanical subassemblies
- Management of security stocks and spare parts of our manufactured
- Technical support service after sales

010101  
110101  
101011



## Firmware / Software

- Functional analysis
- Technological analysis
- Draft, Layout
- Planning
- Program coding
- Testing and debugging the program
- Program documentation
- Program maintenance



## EMC Laboratory

We have the necessary instrumentation to perform, among others, the following tests:

- IEC 61000-4-4 Tests of immunity to fast electrical transients in bursts.
- IEC 61000-4-5 Immunity tests against shock waves.
- IEC 61000-4-8 Tests of immunity to magnetic fields at industrial frequency.
- IEC 61000-4-9 Test of immunity to impulse magnetic fields.
- IEC 61000-4-11 Tests of immunity to voltage dips, short interruptions and voltage variations.
- IEC 61000-4-29 Tests of immunity to voltage dips, short interruptions and voltage variations in DC power accesses.
- EN 61000-6-1 Part 6-1: Immunity in residential, commercial and light industry environments.
- EN 61000-6-2 Part 6-2: Generic standards. Immunity in industrial environments.

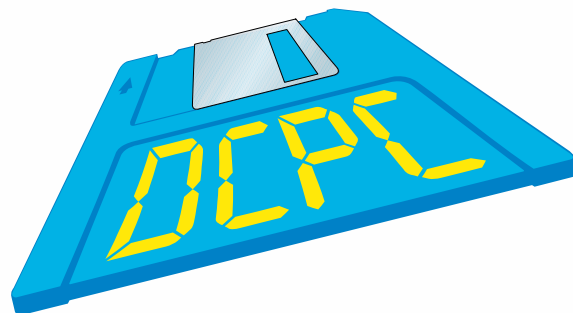


## Case Studies

- **Wireless:**
  - Real-time Wireless Control of Machinery (Safety application in machines)
  - GPS-2G personal locator
  - High power Sub-GHz Radio-Módem
  - 3G communications module
  - 3G monitor of drilling machine controlled via CAN bus
  - RF-Profibus mixed machine controller.
  - Acquisition weighing module through RF (868MHz)
  - Sub-1GHz radio-modem with LoRa modulation
  - Anti-theft alarm for bicycles with LoRa and Bluetooth communication
  - Weighing equipment on board trucks with Bluetooth communication
  - RF-ID identification system (Mifare)
  - RS232 / RS485 to Wifi converter (Device Server)
- **Power supply:**
  - Power supplies, AC / DC and DC / DC converters
  - Drivers and drivers for LED
  - Uninterruptible power supply system with solar panels and battery chargers
- **Electro-medicine:**
  - ECG
  - Cardiac Monitor
- **Weighing:**
  - High-speed static and dynamic weighing systems and equipment
  - Dosing equipment
  - Weighing equipment with gravity compensation system
  - Digital and analog load cells
  - Module for weight acquisition through RS232 / RS485
- **Communications:**
  - RS232 / RS485 to Ethernet converter (Device Server)
  - Optoisolated USB / RS232 to RS485 converter
- **Control and signaling modules:**
  - Monochrome alphanumeric big displays
  - Module to control stepper motors through RS485
  - Proportional control module for inductive or resistive loads (PWM) through RS485
  - Module of digital Inputs and outputs by power relays via RS485
- **Miscellaneous:**
  - Instrumentation for the textile sector
  - Instrumentation for the chemical sector (Laboratory and Process)
  - Cable testing equipment (up to 111 x 111 cable)
  - Equipment for cloth width gauge and centering
  - Applications for Windows and Android, for the control and / or supervision of different electronic devices, using DDBB MySQL, programming in C ++ and java, Cable and Wireless Communications



© **Data-Control PC**  
☎: 902 23 24 30  
[info@dcpc.me](mailto:info@dcpc.me)  
[www.dcpc.me](http://www.dcpc.me)



**FROM CONCEPT TO MASS PRODUCTION**

**Data-Control PC - C/ Pintor Vancells, 175 - 08225 - Terrassa - Barcelona - SPAIN**  
☎: 902 23 24 30 - [info@dcpc.me](mailto:info@dcpc.me) - [www.dcpc.me](http://www.dcpc.me)